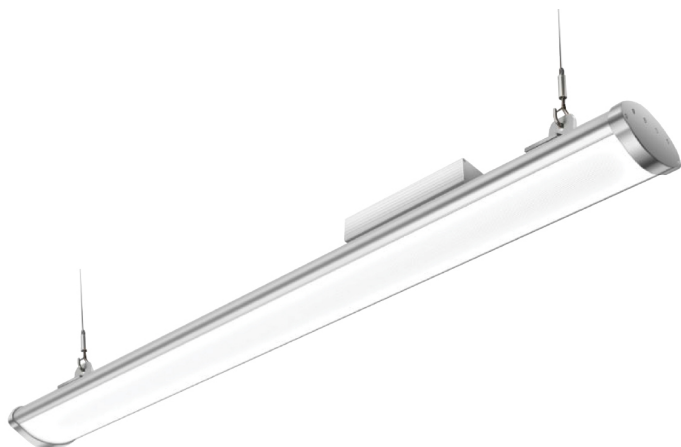




The HBL3 is an attractive high bay LED unit that is fully enclosed and features superior thermal control and durability. This series is ideal for big box retail, warehousing, gymnasiums, ice rinks and manufacturing as well as a variety of specialty applications

HBL3 IP65 Rated high bay



Features and Specifications:

Construction:

- Flexible mounting system allows for adjustment of hanger brackets along back
- Heavy duty extruded aluminum chassis for superior thermal control and durability
- Die cast aluminum end caps and extruded polycarbonate lens are gasketed to the housing for protection against the elements
- 120° Beam angle
- Suitable for -30°C to 50°C (22°F to 122°F)
- Diffused lens reduces glare
- Corrosion-proof, dust-proof and water-proof

Size Options:

- Available 2' (100W), 3' (150W) and 4' (200W) sizes (nominal)

Listing & Ratings:

- All electrical components are U.L. listed or recognized
- UL/cUL listed
- IP65 rated
- Design Lights Consortium® Premium qualified luminaire (at over 140 Lm/W)

Mounting Options:

- Suspended mount
- Mounting kit is included - (2) ceiling anchors and 3' stainless steel aircraft cable kits with adjustable grippers and caribeaner type hooks (6' cord std)

Driver:

- Universal voltage 120-277V standard
- 0-10V Dimming standard

Warranty:

- 10 years - part replacement only (see our terms & conditions page at www.lamarled.com for details)

See page 2 for lumen chart & dimensions

Ordering Guide / Example

HBL3420-50D

HBL3		
Series	Size/Wattage	CCT
HBL3 = High bay	210 = 2' nominal 100W 315 = 3' nominal 150W 420 = 4' nominal 200W	50D = 5000K 0-10V dimming

Consult factory for additional options not shown or listed

Correlated Color Temperatures (CCTs) fall within the nominal range as per ANSI C78.377A

Project Information:

Job Name:	Fixture Type:
Catalog #:	Date:
Comments:	

Certification & Listings:

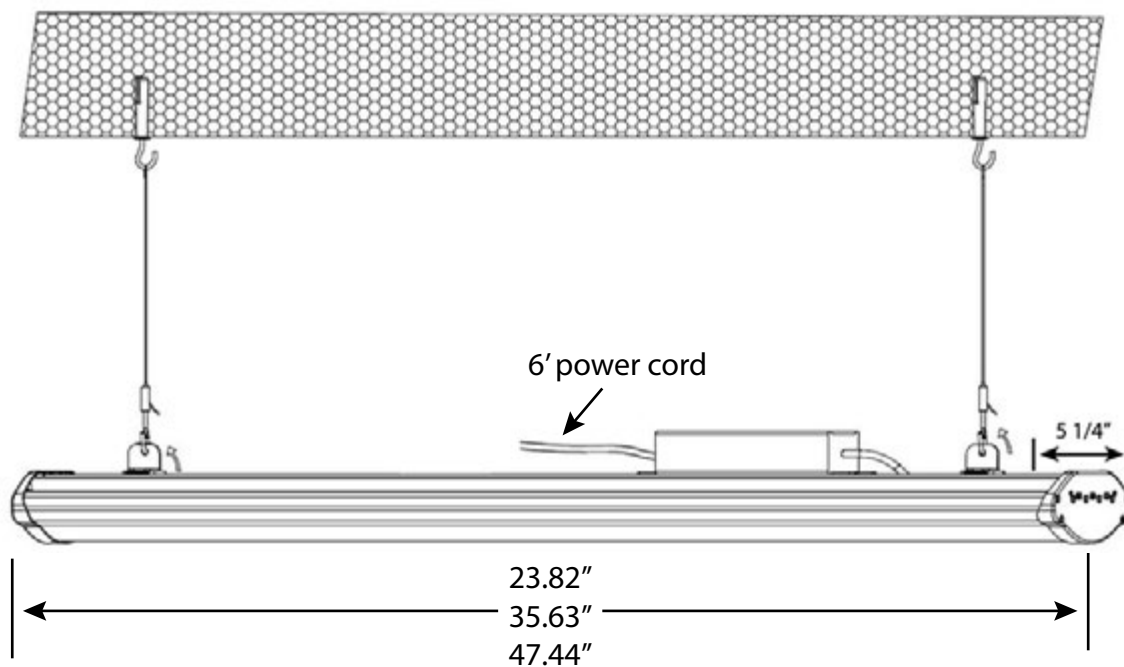




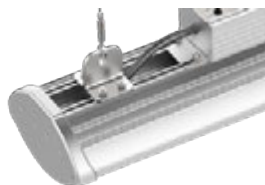
HBL3 high bay

BEFORE INSTALLATION, PLEASE CONSULT YOUR LOCAL ORDINANCES AND BUILDING CODES FOR COMPLIANCE

Dimensions



Mounting kit is included - (2) ceiling anchors and 3' stainless steel aircraft cable kits with adjustable grippers and caribeaner type hooks (6' cord std)



Corrosion and age resistant brackets are included. Adjust position by loosening screws

Lumen/Wattage Chart - 5000K

2'	3'	4'
14,000 min 100W	21,100 min 150W	28,300 min 200W

Extended operation in high ambient temperatures (over 50°C) may result in decreased LED life

LaMar Lighting assumes no responsibility for misapplication of fixtures

Due to the rapid advancements in LED technology, please consult our website for the most current technical data.

Specifications subject to change without notice - Rev 0918