



LTL NUMBER: 04829
 PREPARED FOR: LAMAR LIGHTING COMPANY, INC.
 CATALOG NUMBER: C2132E81PA
 LUMINAIRE: FORMED STEEL HOUSING, FORMED WHITE ENAMEL STEEL REFLECTOR,
 CLEAR ACRYLIC PRISMATIC LENS.
 LAMPS: ONE PHILIPS F32T8/TL741 RATED AT 2850 LUMENS
 BALLAST: ONE ADVANCE REL-1P32-SC
 MOUNTING: SURFACE

DATE: 10-12-1999

#04829

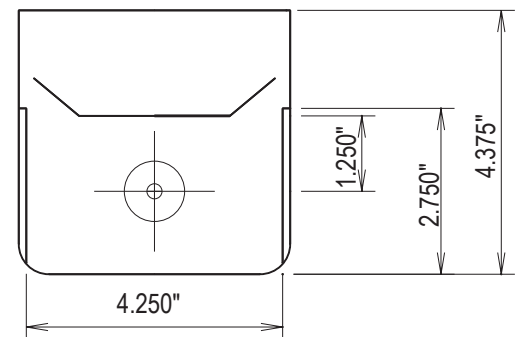
LUMEN TO CANDELA RATIO USED = 9.18
 TOTAL INPUT WATTS = 30.0 AT 120.0 VOLTS
 THE 0 DEGREE PLANE IS PARALLEL WITH THE LAMPS.

CANDELA DISTRIBUTION

	0.0	22.5	45.0	67.5	90.0
0	469	469	469	469	469
5	466	470	474	471	473
15	452	461	481	491	495
25	414	442	477	496	504
35	367	408	456	486	500
45	300	350	410	444	457
55	201	259	335	388	409
65	91	169	284	364	391
75	39	113	233	321	349
85	10	93	224	297	318
90	1	64	220	286	310
95	0	51	201	294	322
105	0	43	118	252	306
115	0	36	92	156	193
125	0	33	80	114	132
135	0	26	61	81	87
145	0	18	42	59	62
155	0	9	26	36	41
165	0	10	14	19	19
175	0	4	7	5	6
180	0	0	0	0	0

FLUX

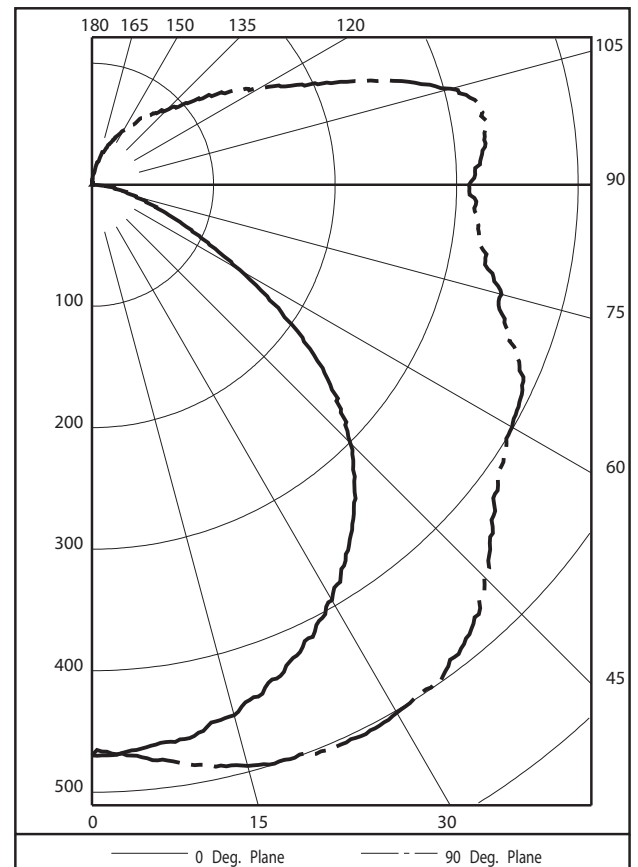
	45
	135
	217
	278
	305
	289
	261
	228
	211
	191
	150
	96
	65
	41
	24
	11
	4
	1



ZONAL LUMEN SUMMARY

ZONAL ZONE	LUMEN LUMENS	%LAMP	%FIXT
0- 30	396	13.9	15.5
0- 40	675	23.7	26.4
0- 60	1269	44.5	49.7
0- 90	1969	69.1	77.2
90-120	437	15.3	17.1
90-130	502	17.6	19.7
90-150	567	19.9	22.2
90-180	582	20.4	22.8
0-180	2552	89.5	100.0

TOTAL LUMINAIRE EFFICIENCY: 89.5%
 TOTAL REFLECTANCE OF PAINT: 90.5%
 CIE TYPE: SEMI-DIRECT
 PLANE: 0-DEG 90-DEG
 SPACING CRITERIA: 1.2 1.6



TESTED BY HERSCHEL SCHRECK
 CHECKED BY MIKE GRATHER



LUMINAIRE TESTING LABORATORY, INC.



905 Harrison Street · Allentown, PA 18103 · (610) 770-1044 · Fax (610) 770-8912 · www.LuminaireTesting.com

LTL NUMBER: 04829

DATE: 10-12-1999

PREPARED FOR: LAMAR LIGHTING COMPANY, INC.

COEFFICIENTS OF UTILIZATION - ZONAL CAVITY METHOD
EFFECTIVE FLOOR CAVITY REFLECTANCE 0.20

Table with 15 columns (RC, RW, 80, 70, 50, 30, 10, 0) and 11 rows of utilization coefficients.

PLANE: 0-DEG 90-DEG
LUMINOUS LENGTH: 47.000 4.250
HEIGHT OF SIDE: 0.000 2.750

Table with 4 columns (ANGLE IN DEG, AVERAGE 0-DEG, AVERAGE 45-DEG, AVERAGE 90-DEG) and 6 rows of luminance values.



LTL NUMBER: 04829

DATE: 10-12-1999

PREPARED FOR: LAMAR LIGHTING COMPANY, INC.

CANDELA DISTRIBUTION

ZONAL LUMEN SUMMARY

Table with 6 columns: Candela values (0-180) and Zonal Lumen Summary (0-180). The table shows the distribution of light intensity across different zones.

THIS TEST WAS CONDUCTED USING RELATIVE PHOTOMETRY TECHNIQUES ACCORDING TO STANDARD IESNA PROCEDURES. THE USER MUST THEREFORE USE CAUTION IN THE FOLLOWING SITUATIONS: 1) THIS TEST WAS PERFORMED USING A SPECIFIC BALLAST/LAMP COMBINATION. EXTRAPOLATION OF THESE DATA FOR OTHER BALLAST/LAMP COMBINATIONS MAY PRODUCE ERRONEOUS RESULTS. 2) ACCORDING TO IESNA PROCEDURES, THE BALLAST(S) AND LAMP(S) ARE PRESUMED TO PRODUCE 100% OF RATED OUTPUT. AN APPROPRIATE BALLAST FACTOR MUST BE APPLIED TO THE LUMEN OUTPUT RATINGS AND LUMINOUS INTENSITY VALUES GIVEN. 3) THIS TEST WAS CONDUCTED IN A CONTROLLED LABORATORY ENVIRONMENT WHERE THE AMBIENT TEMPERATURE WAS HELD AT 25 C 1 C. FIELD PERFORMANCE MAY DIFFER PARTICULARLY IN REGARDS TO CHANGE IN LUMINOUS OUTPUT AS A RESULT OF DIFFERENCE IN AMBIENT TEMPERATURE AND METHOD OF MOUNTING THE LUMINAIRE.



LUMINAIRE TESTING LABORATORY, INC.



905 Harrison Street · Allentown, PA 18103 · (610) 770-1044 · Fax (610) 770-8912 · www.LuminaireTesting.com

LTL NUMBER: 04829

DATE: 10-12-1999

PREPARED FOR: LAMAR LIGHTING COMPANY, INC.

VISUAL COMFORT PROBABILITY TABLE

RATED LUMENS PER LAMP 2850.

100. FC. ROOM		REFLECTANCES 80/50/20 LUMINAIRES 0 DEG PLANE				LUMINAIRES 90 DEG PLANE			
W	L	8.5	10.0	13.0	16.0	8.5	10.0	13.0	16.0
20	20	68	74	82	89	54	63	77	88
20	30	63	68	74	81	43	50	61	73
20	40	60	65	71	75	38	43	51	61
20	60	58	63	68	72	33	38	44	51
30	20	65	71	79	86	56	64	75	86
30	30	59	64	70	77	44	51	59	71
30	40	55	60	66	71	38	43	50	58
30	60	53	58	63	67	33	38	42	49
30	80	52	56	61	65	30	34	38	43
40	20	64	70	77	85	58	66	76	85
40	30	57	62	68	75	46	53	60	70
40	40	53	58	63	68	40	45	50	58
40	60	51	55	59	64	34	38	42	48
40	80	50	53	57	62	31	35	37	43
40	100	50	53	56	61	29	32	34	39
60	30	56	61	66	73	49	54	61	70
60	40	52	56	61	66	41	46	51	58
60	60	49	52	57	62	35	39	42	48
60	80	48	51	54	59	31	35	37	42
60	100	48	50	53	57	29	33	34	38
100	40	53	56	60	65	46	50	54	61
100	60	49	51	55	59	38	43	45	50
100	80	47	49	52	56	34	38	40	44
100	100	46	48	50	54	32	35	36	40

THIS TABLE WAS CALCULATED ACCORDING TO IESNA LM-42-72. THE VCP CALCULATION PROCEDURE IS MOST ACCURATE FOR LUMINAIRES THAT EXHIBIT THE FOLLOWING CHARACTERISTICS. 1). LUMINAIRE IS RELATIVELY CONSISTANT IN LUMINANCE 2). LUMINAIRE HAS WELL-DEFINED LUMINOUS EDGES AND 3). LUMINAIRE UTILIZES FLUORESCENT LAMPS. CAUTION SHOULD BE USED WHEN APPLYING VCP VALUES BASED ON LUMINAIRES THAT DO NOT CONFORM TO THE ABOVE CONDITIONS.